

**ACCESS 25 METROPOLITAN DISTRICT NOS. 1-6**  
**c/o Pinnacle Consulting Group, Inc.**  
**550 W. Eisenhower Blvd. | Loveland, CO 80537**  
**Phone: 970-669-3611 FAX: 970-669-3612**

January 03, 2023

Weld County  
Office of the Clerk and Recorder  
1402 N 17<sup>th</sup> Ave.  
Greeley, CO 80631

**VIA EMAIL:** ckoppes@weldgov.com  
cc: weld-districts@weldgov.com

Weld County  
Office of the Assessor  
1400 N. 17<sup>th</sup> Avenue  
Greeley, CO 80631

**VIA EMAIL:** bdone@weldgov.com  
cc: assessor@weldgov.com

Division of Local Government  
1313 Sherman Street, Room 521  
Denver, CO 80203

**Via E-Filing Portal**  
Access 25 Metropolitan District No. 1  
Access 25 Metropolitan District No. 2  
Access 25 Metropolitan District No. 3  
Access 25 Metropolitan District No. 4  
Access 25 Metropolitan District No. 5  
Access 25 Metropolitan District No. 6

Dear Sir or Ma'am:

As required by statute (C.R.S. 32-1-306) and 32-1-104 (3)(b), all Title 32 Article 1 special districts are required to file a current, accurate map of district boundaries with the County Clerk and Recorder, Assessor and Division of Local Government. On behalf of **Access 25 Metropolitan District Nos. 1-6** please accept the attached updated District boundary map. The District(s) are wholly located within Weld County.

Please feel free to contact me with any questions or concerns.

Sincerely,

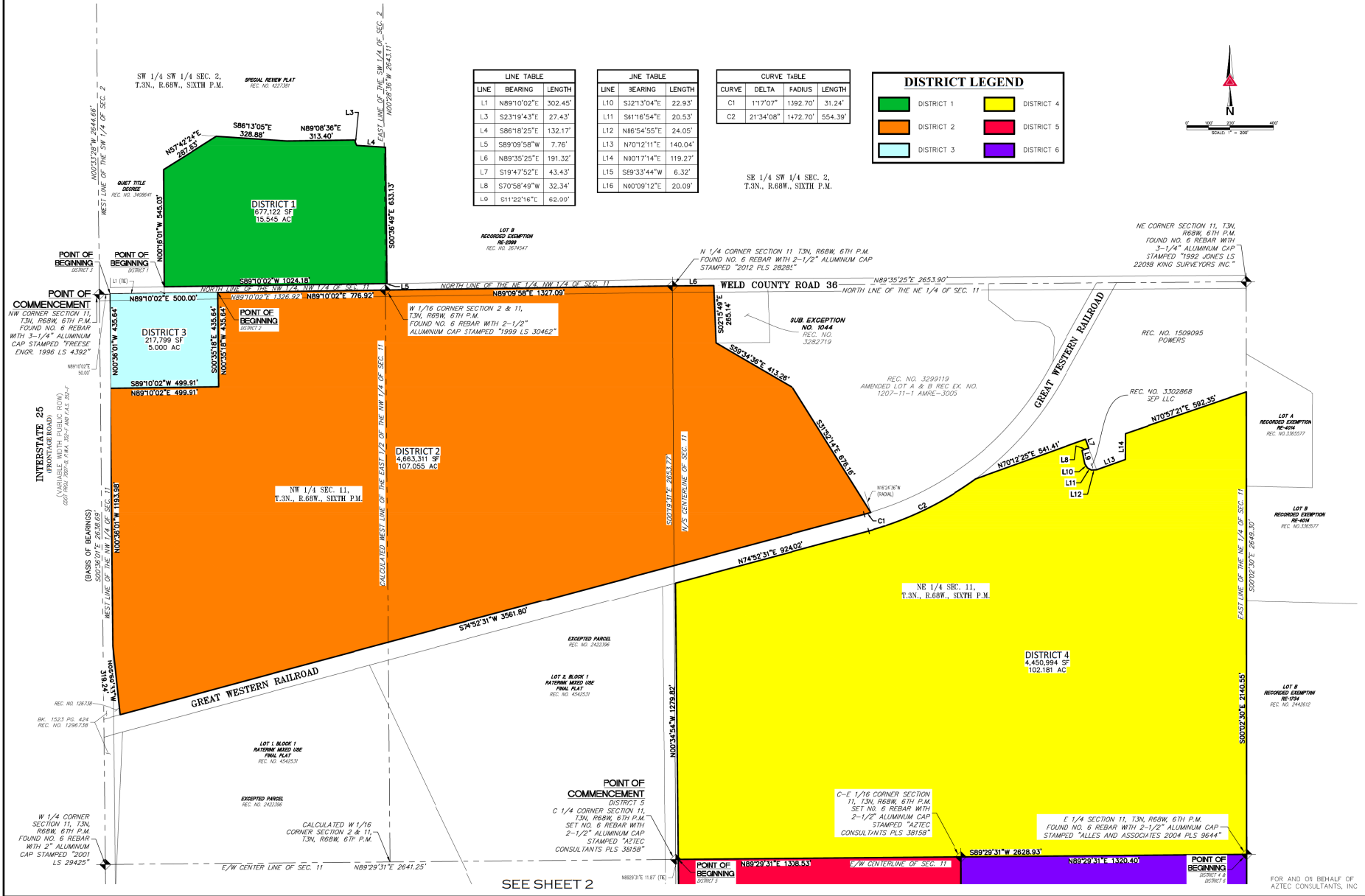
**ACCESS 25 METROPOLITAN DISTRICT NOS. 1-10**

*Bryan Newby*

Bryan Newby  
Assistant District Manager

# DISTRICT MAPPING EXHIBIT

SIX (6) PARCELS LOCATED IN THE SOUTHWEST QUARTER OF SECTION 2 & SECTION 11,  
TOWNSHIP 3 NORTH, RANGE 68 WEST OF THE SIXTH PRINCIPAL MERIDIAN,  
COUNTY OF WELD, STATE OF COLORADO



SCALE  
1" = 200'
REVISION DESCRIPTION

NO.	DATE	BY

DATE
BY

**AZTEC**  
CONSULTANTS, INC.

300 East Mineral Ave., Suite 1  
Littleton, Colorado 80122  
Phone: (303) 771-1300  
Fax: (303) 771-1308  
www.aztecconsultants.com

**DISTRICT MAPPING EXHIBIT**  
SEC. 2 & SEC. 11, T.3N., R.68W., 6TH P.M.  
WELD COUNTY, COLORADO

SHEET  
**ONE**

OF 2 SHEETS

PREPARED FOR

FOR AND OR BEHALF OF  
AZTEC CONSULTANTS, INC.

JOB NO. 54821-10
2022-01-25

